

Office Space with Exposure to Highway 1

# FOR LEASE

1090 Lougheed Hwy, Coquitlam B.C.



For more information, please contact

Derick Fluker  
604.638.2125  
dfluker@formretail.ca  
www.formretail.ca

Developed by



Marketed by



Office Space with Exposure to Highway 1

# FOR LEASE

1090 Lougheed Hwy, Coquitlam B.C.

- New Construction
- Elevator Access
- Exterior Signage
- 1,200 SF Exterior Patio

## LOCATION

Second floor office space for lease centrally located along Lougheed Highway in Coquitlam. This site is being fully renovated and will accommodate new retail stores to complement the existing commercial retailers in the area. Easy access from Highway 1 and Lougheed Highway, which is also a major public transit route.

## ACCESS/EGRESS

Two access points along Woolridge Street; a third is proposed on the slip road from Lougheed Highway

## PARKING RATIO

3.2/1,000 SF

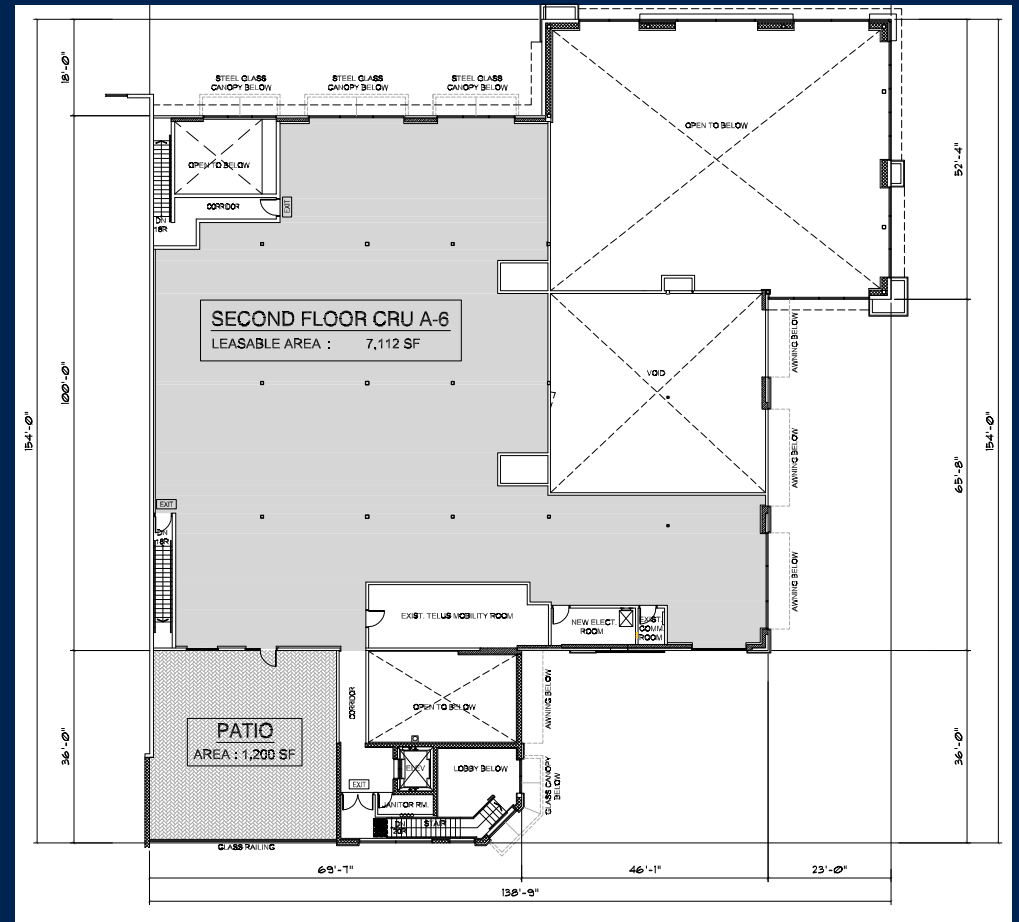
## ASKING RENT

Contact listing agent

## SQUARE FEET

7,112 SF with 1,200 SF patio  
(Space can be demised.)

## SECOND FLOOR PLAN



Office Space with Exposure to Highway 1

# FOR LEASE

1090 Lougheed Hwy, Coquitlam B.C.

## OVERALL SITE PLAN



Office Space with Exposure to Highway 1

# FOR LEASE

1090 Lougheed Hwy, Coquitlam B.C.

